

MLPX

Технические характеристики

По вопросам продаж и поддержки обращайтесь:

Алматы (7273)495-231	Казань (843)206-01-48	Новокузнецк (3843)20-46-81	Смоленск (4812)29-41-54
Архангельск (8182)63-90-72	Калининград (4012)72-03-81	Новосибирск (383)227-86-73	Сочи (862)225-72-31
Астрахань (8512)99-46-04	Калуга (4842)92-23-67	Омск (3812)21-46-40	Ставрополь (8652)20-65-13
Барнаул (3852)73-04-60	Кемерово (3842)65-04-62	Орел (4862)44-53-42	Сургут (3462)77-98-35
Белгород (4722)40-23-64	Киров (8332)68-02-04	Оренбург (3532)37-68-04	Тверь (4822)63-31-35
Брянск (4832)59-03-52	Краснодар (861)203-40-90	Пенза (8412)22-31-16	Томск (3822)98-41-53
Владивосток (423)249-28-31	Красноярск (391)204-63-61	Пермь (342)205-81-47	Тула (4872)74-02-29
Волгоград (844)278-03-48	Курск (4712)77-13-04	Ростов-на-Дону (863)308-18-15	Тюмень (3452)66-21-18
Вологда (8172)26-41-59	Липецк (4742)52-20-81	Рязань (4912)46-61-64	Ульяновск (8422)24-23-59
Воронеж (473)204-51-73	Магнитогорск (3519)55-03-13	Самара (846)206-03-16	Уфа (347)229-48-12
Екатеринбург (343)384-55-89	Москва (495)268-04-70	Санкт-Петербург (812)309-46-40	Хабаровск (4212)92-98-04
Иваново (4932)77-34-06	Мурманск (8152)59-64-93	Саратов (845)249-38-78	Челябинск (351)202-03-61
Ижевск (3412)26-03-58	Набережные Челны (8552)20-53-41	Севастополь (8692)22-31-93	Череповец (8202)49-02-64
Иркутск (395)279-98-46	Нижний Новгород (831)429-08-12	Симферополь (3652)67-13-56	Ярославль (4852)69-52-93
Россия (495)268-04-70	Киргизия (996)312-96-26-47	Казахстан (7172)727-132	

HARD-WIRED SINGLE-PHASE TYPE 2 (OR 3) AC SURGE PROTECTOR



MLPX SERIES

- Ultra compact surge protector for 230 Vac networks
- For Class I and Class II
- Breakable mounting bracket
- Protection rating: IP67
- VG Technology (MLPX1VG and MLPX2VG)
- Improved coordination with driver (VG versions)
- Disconnection signaling by indicator
- AC disconnection in case of end of life
- EN 61643-11/IEC 61643-11 certification

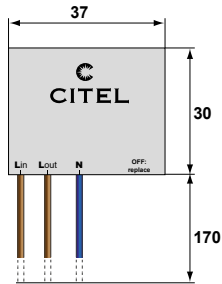
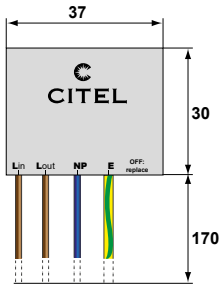
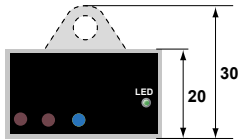
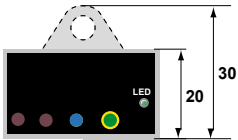
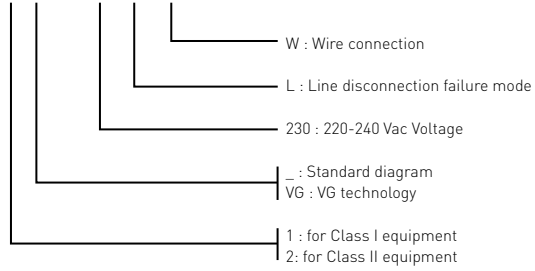


Characteristics

CITEL Model		MLPX1-230L-W	MLPX1VG-230L-W	MLPX2-230L-W	MLPX2VG-230L-W
Description		Compact Type 2 (or 3) hard-wired surge protector			
Application		Class I LED system	Class I LED system	Class II LED system	Class II LED system
Network		220-240 V single phase	220-240 V single phase	220-240 V single phase	220-240 V single phase
AC system		TT/TN	TT/TN	TT/TN	TT/TN
Protection mode(s)		CM/DM	CM/DM	DM	DM
Max. AC operating voltage	Uc	320 Vac	320 Vac	320 Vac	320 Vac
Max. Load current	IL	10 A	10 A	10 A	10 A
Residual current - Leakage current at Uc	Ipe	none	none	none	none
Temporary Over Voltage (TOV) Characteristics - 5 sec.	UT	335 Vac withstand	335 Vac withstand	335 Vac withstand	335 Vac withstand
Temporary Over Voltage (TOV) Characteristics - 120 mn	UT	440 Vac disconnection	440 Vac disconnection	440 Vac disconnection	440 Vac disconnection
Temporary Over Voltage N/PE (TOV HT)	UT	1200 V/300A/200 ms disconnection	1200 V/300A/200 ms disconnection	-	-
Nominal discharge current <i>15 x 8/20 μs impulses</i>	In	5 kA	5 kA	5 kA	5 kA
Max. discharge current <i>max. withstand @ 8/20 μs by pole</i>	I _{max}	10 kA	10 kA	10 kA	10 kA
Total max. discharge current <i>max. total withstand @ 8/20 μs</i>	I _{max total}	20 kA	20 kA	-	-
Withstand on Combination waveform - Class III test	Uoc	10 kV	10 kV	10 kV	10 kV
Protection level L/N @In (8/20μs)	Up	1.5 kV	1.5 kV	1.5 kV	1.5 kV
Protection level N/PE @In (8/20μs)	Up	1.5 kV	1.5 kV	-	-
Admissible short-circuit current	Iscrr	10000 A	10000 A	10000 A	10000 A
Associated disconnectors					
Thermal disconnector		internal			
Installation ground fault breaker		Type «S» or delayed			
Mechanical characteristics					
Dimensions		see diagram			
Connection to Network		by wires:1.5 mm ² (L/N) and 2.5 mm ² (PE)			
Voltage/operating indicator		by wires:1.5 mm ² (L/N)			
Disconnection indicator		Green Led ON			
Failsafe behavior		Led green OFF and AC network cut-off			
Mounting		Disconnection and AC network cut-off			
Operating temperature		wall or plate			
Protection rating		-40/+85°C			
Housing material		IP67			
		Thermoplastic UL94 V-0			
Standards					
Certification		EN 61643-11 / IEC 61643-11			
Part number					
		711214	711294	711217	711292

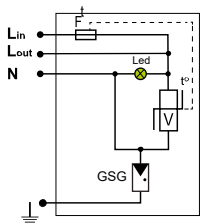
HARD-WIRED SINGLE-PHASE TYPE 2 (OR 3) AC SURGE PROTECTOR

MLPX1VG-230L-W

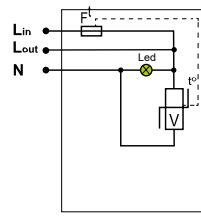


MLPX1-230L-W
MLPX1VG-230L-W

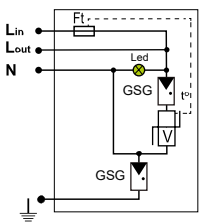
MLPX2-230L-W
MLPX2VG-230L-W



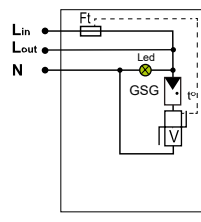
MLPX1



MLPX2



MLPX1VG

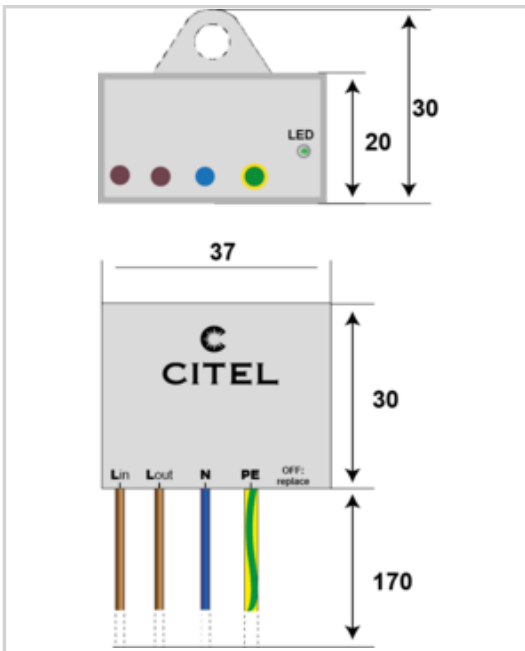


MLPX2VG

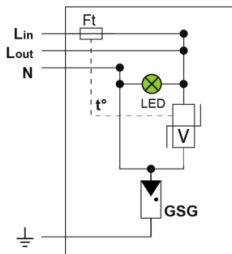
V : Varistor
 GSG: Specific gas tube
 Ft : Thermal fuse
 LED : Disconnection indicator
 t° : Thermal disconnection system



- Ultra compact Type 2+3 hard wired surge protectors
- Wall mounting and hard wired connection
- Bracket breakable
- Protection rating : IP20
- Disconnection signaling by indicator
- AC disconnection in case of end of life
- EN 61643-11, IEC 61643-11 and UL1449 4ed. compliance



Electrical Characteristics		
SPD type (following IEC tests)		2+3
Network		220-240 V single-phase
AC system		TT/TN
Max. AC operating voltage	Uc	320 Vac
Max. load current	IL	10 A
Temporary Over Voltage (TOV) Characteristics - 5 sec. (Without disconnection)	UT	335 Vac withstand
Temporary Over Voltage (TOV) Characteristics - 120 mn (Without disconnection or with safety disconnection)	UT	440 Vac disconnection
Temporary Over Voltage N/PE (TOV HT) (Without disconnection or with safety disconnection)	UT	1200 V/300A/200 ms disconnection
Residual Current (Leakage current to Ground)	Ipe	None
Nominal discharge current (15 x 8/20 µs impulses)	In	5 kA
Max. discharge current (max. withstand @ 8/20 µs by pole)	Imax	10 kA
Total Maximum discharge current (max. total withstand @ 8/20 µs)	Imax Total	20 kA
Withstand on Combination waveform IEC 61643-11 (Class III test: 1.2/50µs - 8/20µs)	Uoc	10 kV
Withstand on overvoltages IEEE C62.41.1		10 kV / 10 kA
Protection mode(s)		Common/Differential mode
Protection level L/N (@ In (8/20µs))	Up L/N	1.5 kV
Protection level L/PE (@ In (8/20µs))	Up L/PE	1.5 kV
Protection level CM/DM (@ In (8/20µs))	Up mc /md	1.5 kV / 1.5 kV
Admissible short-circuit current	Iscrr	10 000 A



V: Varistor
 GSG: Specific gas tube
 LED: Disconnection indicator
 Ft: Thermal fuse
 t°: Thermal system disconnection

Mechanical Characteristics		
Technology		MOV+GDT
Connection to Network		by wires : 1.5 mm ² (L/N) and 2.5 mm ² (PE)
Mounting		Wall or plate
Housing material		Thermoplastic UL94 V-0
Operating temperature	Tu	-40/+85°C
Protection rating		IP20
Failsafe mode		Disconnection and AC line cut-off
Disconnection indicator		Led green OFF and AC network cut-off
Voltage/operating indicator		Green Led ON
Dimensions		See diagram
Weight		0.038 kg

Disconnectors		
Thermal disconnector		Internal
Installation ground fault breaker		Type 'S' or delayed

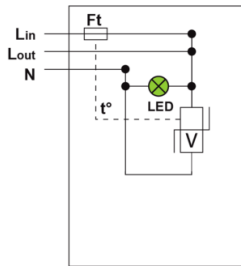
Standards		
Standards compliance		IEC 61643-11 / EN 61643-11 / UL1449 ed.4

Part number		
		711216

MLPX2-230L-W/IP20



- Ultra compact Type 2+3 hard wired surge protectors
- Wall mounting and hard wired connection
- Bracket breakable
- Protection rating : IP20
- Disconnection signaling by indicator
- AC disconnection in case of end of life
- EN 61643-11, IEC 61643-11 and UL1449 4ed. compliance



V: Varistor
 Ft: Thermal fuse
 LED: Disconnection indicator
 t°: Thermal disconnection system

Electrical Characteristics		
SPD type (following IEC tests)		2+3
Network		220-240 V single-phase
AC system		TT/TN
Max. AC operating voltage	Uc	320 Vac
Max. load current	IL	10 A
Temporary Over Voltage (TOV) Characteristics - 5 sec. (Without disconnection)	UT	335 Vac withstand
Temporary Over Voltage (TOV) Characteristics - 120 mn (Without disconnection or with safety disconnection)	UT	440 Vac disconnection
Temporary Over Voltage N/PE (TOV HT) (Without disconnection or with safety disconnection)	UT	1200 V/300A/200 ms disconnection
Residual Current (Leakage current to Ground)	Ipe	None
Nominal discharge current (15 x 8/20 µs impulses)	In	5 kA
Max. discharge current (max. withstand @ 8/20 µs by pole)	Imax	10 kA
Total Maximum discharge current (max. total withstand @ 8/20 µs)	Imax Total	20 kA
Withstand on Combination waveform IEC 61643-11 (Class III test: 1.2/50µs - 8/20µs)	Uoc	10 kV
Withstand on overvoltages IEEE C62.41.1		10 kV / 10 kA
Protection mode(s)		Differential Mode
Protection level L/N (@ In (8/20µs))	Up L/N	1.5 kV
Protection level CM/DM(@ In (8/20µs))	Up mc /md	1.5 kV
Admissible short-circuit current	Iscrr	10 000 A
Mechanical Characteristics		
Technology		MOV+GDT
Connection to Network		by wires : 1.5 mm ² (L/N) and 2.5 mm ² (PE)
Mounting		Wall or plate
Housing material		Thermoplastic UL94 V-0
Operating temperature	Tu	-40/+85°C
Protection rating		IP20
Failsafe mode		Disconnection and AC line cut-off
Disconnection indicator		Led green OFF and AC network cut-off
Voltage/operating indicator		Green Led ON
Dimensions		See diagram
Weight		0.031 kg
Disconnectors		
Thermal disconnector		Internal
Installation ground fault breaker		Type 'S' or delayed
Standards		
Standards compliance		IEC 61643-11 / EN 61643-11 / UL1449 ed.4
Part number		
711218		

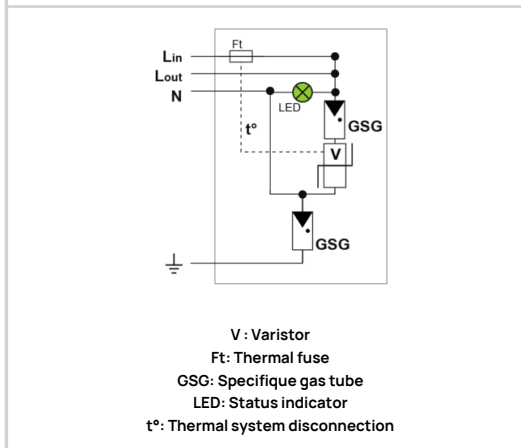
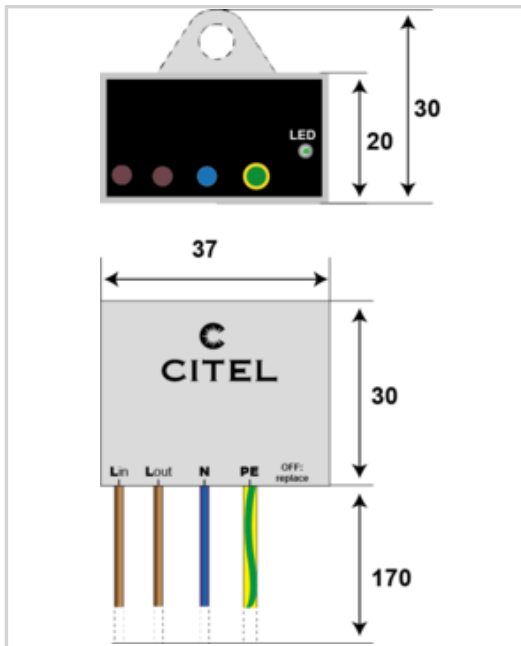


CITEL

MLPX1VG-230L-W/IP20



- ↳ Ultra compact Type 2+3 hard wired surge protectors
- ↳ Wall mounting and hard wired connection
- ↳ VG Technology
- ↳ No aging
- ↳ Bracket breakable
- ↳ Disconnection signaling by indicator
- ↳ AC disconnection in case of end of life
- ↳ EN 61643-11, IEC 61643-11 and UL1449 4ed. compliance



Electrical Characteristics		
SPD type (following IEC tests)		2+3
Network		230-277 V single-phase
AC system		TT/TN
Max. AC operating voltage	Uc	320 Vac
Max. load current	IL	10 A
Temporary Over Voltage (TOV) Characteristics - 5 sec. (Without disconnection)	UT	335 Vac withstand
Temporary Over Voltage (TOV) Characteristics - 120 mn (Without disconnection or with safety disconnection)	UT	440 Vac disconnection
Temporary Over Voltage N/PE (TOV HT) (Without disconnection or with safety disconnection)	UT	1200 V/300A/200 ms disconnection
Residual Current (Leakage current to Ground)	Ipe	None
Nominal discharge current (15 x 8/20 µs impulses)	In	5 kA
Max. discharge current (max. withstand @ 8/20 µs by pole)	Imax	10 kA
Total Maximum discharge current (max. total withstand @ 8/20 µs)	Imax Total	20 kA
Withstand on Combination waveform IEC 61643-11 (Class III test: 1.2/50µs - 8/20µs)	Uoc	10 kV
Withstand on overvoltages IEEE C62.41.1		10 kV / 10 kA
Protection mode(s)		Common/Differential mode
Protection level L/N (@ In (8/20µs))	Up L/N	1.5 kV
Protection level L/PE (@ In (8/20µs))	Up L/PE	1.5 kV
Admissible short-circuit current	Iscrr	10 000 A
Mechanical Characteristics		
Technology		MOV+GDT
Connection to Network		by wires : 1.5 mm ² (L/N) and 2.5 mm ² (PE)
Mounting		Wall or plate
Housing material		Thermoplastic UL94 V-0
Operating temperature	Tu	-40/+85°C
Protection rating		IP20
Failsafe mode		Disconnection and AC line cut-off
Disconnection indicator		Green Led OFF and AC line cut-off
Voltage/operating indicator		Green Led ON
Remote signaling of disconnection		No
Dimensions		See diagram
Weight		0.038 kg
Disconnectors		
Thermal disconnector		Internal
Installation ground fault breaker		Type 'S' or delayed
Standards		
Standards compliance		IEC 61643-11 / EN 61643-11 / UL1449 ed.4
Part number		
711296		

По вопросам продаж и поддержки обращайтесь:

Алматы (7273)495-231	Казань (843)206-01-48	Новокузнецк (3843)20-46-81	Смоленск (4812)29-41-54
Архангельск (8182)63-90-72	Калининград (4012)72-03-81	Новосибирск (383)227-86-73	Сочи (862)225-72-31
Астрахань (8512)99-46-04	Калуга (4842)92-23-67	Омск (3812)21-46-40	Ставрополь (8652)20-65-13
Барнаул (3852)73-04-60	Кемерово (3842)65-04-62	Орел (4862)44-53-42	Сургут (3462)77-98-35
Белгород (4722)40-23-64	Киров (8332)68-02-04	Оренбург (3532)37-68-04	Тверь (4822)63-31-35
Брянск (4832)59-03-52	Краснодар (861)203-40-90	Пенза (8412)22-31-16	Томск (3822)98-41-53
Владивосток (423)249-28-31	Красноярск (391)204-63-61	Пермь (342)205-81-47	Тула (4872)74-02-29
Волгоград (844)278-03-48	Курск (4712)77-13-04	Ростов-на-Дону (863)308-18-15	Тюмень (3452)66-21-18
Вологда (8172)26-41-59	Липецк (4742)52-20-81	Рязань (4912)46-61-64	Ульяновск (8422)24-23-59
Воронеж (473)204-51-73	Магнитогорск (3519)55-03-13	Самара (846)206-03-16	Уфа (347)229-48-12
Екатеринбург (343)384-55-89	Москва (495)268-04-70	Санкт-Петербург (812)309-46-40	Хабаровск (4212)92-98-04
Иваново (4932)77-34-06	Мурманск (8152)59-64-93	Саратов (845)249-38-78	Челябинск (351)202-03-61
Ижевск (3412)26-03-58	Набережные Челны (8552)20-53-41	Севастополь (8692)22-31-93	Череповец (8202)49-02-64
Иркутск (395)279-98-46	Нижний Новгород (831)429-08-12	Симферополь (3652)67-13-56	Ярославль (4852)69-52-93
Россия (495)268-04-70	Киргизия (996)312-96-26-47	Казахстан (7172)727-132	