

PRC

Технические характеристики

По вопросам продаж и поддержки обращайтесь:

Алматы (7273)495-231	Казань (843)206-01-48	Новокузнецк (3843)20-46-81	Смоленск (4812)29-41-54
Архангельск (8182)63-90-72	Калининград (4012)72-03-81	Новосибирск (383)227-86-73	Сочи (862)225-72-31
Астрахань (8512)99-46-04	Калуга (4842)92-23-67	Омск (3812)21-46-40	Ставрополь (8652)20-65-13
Барнаул (3852)73-04-60	Кемерово (3842)65-04-62	Орел (4862)44-53-42	Сургут (3462)77-98-35
Белгород (4722)40-23-64	Киров (8332)68-02-04	Оренбург (3532)37-68-04	Тверь (4822)63-31-35
Брянск (4832)59-03-52	Краснодар (861)203-40-90	Пенза (8412)22-31-16	Томск (3822)98-41-53
Владивосток (423)249-28-31	Красноярск (391)204-63-61	Пермь (342)205-81-47	Тула (4872)74-02-29
Волгоград (844)278-03-48	Курск (4712)77-13-04	Ростов-на-Дону (863)308-18-15	Тюмень (3452)66-21-18
Вологда (8172)26-41-59	Липецк (4742)52-20-81	Рязань (4912)46-61-64	Ульяновск (8422)24-23-59
Воронеж (473)204-51-73	Магнитогорск (3519)55-03-13	Самара (846)206-03-16	Уфа (347)229-48-12
Екатеринбург (343)384-55-89	Москва (495)268-04-70	Санкт-Петербург (812)309-46-40	Хабаровск (4212)92-98-04
Иваново (4932)77-34-06	Мурманск (8152)59-64-93	Саратов (845)249-38-78	Челябинск (351)202-03-61
Ижевск (3412)26-03-58	Набережные Челны (8552)20-53-41	Севастополь (8692)22-31-93	Череповец (8202)49-02-64
Иркутск (395)279-98-46	Нижний Новгород (831)429-08-12	Симферополь (3652)67-13-56	Ярославль (4852)69-52-93
Россия (495)268-04-70	Киргизия (996)312-96-26-47	Казахстан (7172)727-132	

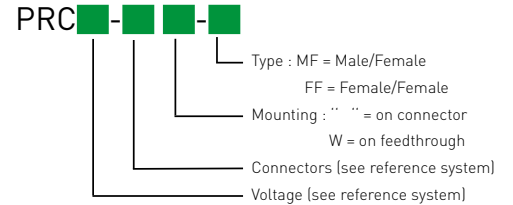
«QUARTER-WAVE» COAXIAL PROTECTORS

PRC SERIES



PRC1800-716/MF

- Low insertion losses
- $I_{max} > 50 \text{ kA}$
- Available for wide-band application
- No maintenance



Characteristics

CITEL Model	PRC822S*	PRC900*	PRC1800*	PRC2100*	PRC5800*
Description	"Quarter wave" coaxial protector				
Technology	Quarter Wave	Quarter Wave	Quarter Wave	Quarter Wave	Quarter Wave
Frequency range	f 800-2200MHz	870-960MHz	1700-1950MHz	1800-2400MHz	4500-6000MHz
Max Power	P 1500 W (7/16 = 2500 W)	1500 W (7/16 = 2500 W)	1500 W (7/16 = 2500 W)	1500 W	1500 W
Impedance	Z 50 ohms	50 ohms	50 ohms	50 ohms	50 ohms
Insertion loss	< 0.2 dB	< 0.2 dB	< 0.2 dB	< 0.2 dB	< 0.2 dB
Return loss	> 20 dB	> 20 dB	> 20 dB	> 20 dB	> 20 dB
VSWR	<1.2:1	<1.2:1	<1.2:1	<1.2:1	<1.2:1
PIM 3rd order (2x20W)	<-160 dBc	<-160 dBc	<-160 dBc	<-160 dBc	<-160 dBc
Max. Load current	IL 10A	10A	10A	10A	10A
Nominal discharge current <i>8/20µs Test x 10 - C2 Category</i>	In 25 kA	50 kA	50 kA	25 kA	25 kA
Max. discharge current <i>max. withstand @ 8/20 µs by pole</i>	Imax 50 kA	100 kA	100 kA	50 kA	50 kA
Impulse current <i>2 x 10/350µs Test - D1 Category</i>	limp 25 kA	50 kA	50 kA	25 kA	25 kA
Protection level @ 1kV/µs- C3 Category	Up < 30 V	< 30 V	< 30 V	< 30 V	< 30 V
Failsafe behavior	without	without	without	without	without
Mechanical characteristics					
Dimensions	see diagram				
Connection to Network	N, 4.3-1 or 7/16 connector	N, 4.3-10, TNC or 7/16 connector	N, 4.3-10, TNC or 7/16 connector	N connector	N connector
Mounting	on connector or feedthrough (W version)				connector
Operating temperature	-40/+85°C				
Protection rating	IP66				
Housing material	Brass/Surface plating : Cu Zn Sn				
Contacts	Bronze/Surface plating: Au or -Ag				
Insulation material	PTFE				
Standards					
Compliance	IEC 61643-21 / EN 61643-21 / UL497C / UL497E				
* Part number					
N connector Female/Female	PRC822S-N/FF 61013	PRC900-N/FF 621124	PRC1800-N/FF 621125	PRC2100-N/FF -	PRC5800-N/FF 621151
N connector Male/Female	PRC822S-N/MF 61003	PRC900-N/MF 621111	PRC1800-N/MF 621112	PRC2100-N/MF 621183	PRC5800-N/MF 621112
N connector Female/Female - Feedthrough mounting	-	-	-	PRC2100-NW/ FF 621172	-
N connector Male/Female - Feedthrough mounting	-	-	PRC1800-NW/ MF 61108	PRC2100-NW/ MF	-
T connector Female/Female	-	PRC900-T/FF 621126	PRC1800-T/FF 621127	-	-
T connector Male/Female	-	PRC900-T/MF 621113	PRC1800-T/MF 621115	-	-
7/16 connector Male/Female	PRC822S-716/MF 621139	PRC900-716/MF 621110	PRC1800-716/MF 621108	-	-
7/16 connector Female/Female	PRC822S-716/FF 67413	PRC900-716/FF 621109	PRC1800-716/FF 621107	-	-
4.3-10 connector Male/Female	PRC822S-4310/MF -	PRC900-4310/MF -	PRC1800-4310/MF -	-	-
4.3-10 connector Female/Female	PRC822S-4310/FF -	PRC900-4310/FF -	PRC1800-4310/FF -	-	-

* If no ordering code, please contact us for more information

PRC2400-NW/FF



- ↳ 'Quarter wave' coaxial protector type N
- ↳ Frequency : 2300-2500 MHz
- ↳ Low insertion loss
- ↳ $I_{max} > 50$ kA
- ↳ Maintenance free
- ↳ Bi-directional
- ↳ IP65



Electrical Characteristics		
Frequency range	f	2300-2500 MHz
Insertion loss		< 0.2 dB
Return loss		> 20 dB
Impedance		50 ohms
VSWR		< 1.2:1
Max. load current	IL	10 A
Max. discharge current (max. withstand @ 8/20 μ s by pole)	I_{max}	50 kA
Protection mode(s)		Common mode
Protection level (@ I_n (8/20 μ s))	U_p	< 30 V
Impulse current (2 x 10/350 μ s Test - D1 Category)	I_{imp}	25 kA
Nominal discharge current (8/20 μ s Test x 10 - C2 Category)	I_n	25 kA
Max Power		1500 W
PIM 3rd order (2x20W)		< -160 dBc
DC Pass		false
Mechanical Characteristics		
Technology		Quarter Wave
Connection to Network		Connector N Female/Female
Mounting		Feedthrough
Housing material		Brass/Surface plating : Cu Zn Sn
Operating temperature	T_u	-40/+85°C
Protection rating		IP65
Outdoor application		Yes
Failsafe mode		without
Dimensions		See diagram
Contacts		Bronze/Surface Au-Ag
Standards		
Standards compliance		IEC 61643-21 / EN 61643-21 / UL497C / UL497E
RohS compliance		Yes
Part number		
621171		

PRC2400-NW/MF



- 'Quarter wave' coaxial protector type N
- Frequency : 2300-2500 MHz
- Low insertion loss
- I_{max} > 50 kA
- Maintenance free
- Bi-directional
- IP65



Electrical Characteristics		
Frequency range	f	2300-2500 MHz
Insertion loss		< 0.2 dB
Return loss		> 20 dB
Impedance		50 ohms
VSWR		< 1.2:1
Max. load current	IL	10 A
Max. discharge current (max. withstand @ 8/20 μs by pole)	I _{max}	50 kA
Protection mode(s)		Common mode
Protection level (@ I _n (8/20μs))	U _p	< 30 V
Impulse current (2 x 10/350μs Test - D1 Category)	I _{imp}	25 kA
Nominal discharge current (8/20μs Test x 10 - C2 Category)	I _n	25 kA
Max Power		1500 W
PIM 3rd order (2x20W)		< -160 dBc
DC Pass		false
Mechanical Characteristics		
Technology		Quarter Wave
Connection to Network		Connector N Male/Female
Mounting		Feedthrough
Housing material		Brass/Surface plating : Cu Zn Sn
Operating temperature	T _u	-40/+85°C
Protection rating		IP65
Outdoor application		Yes
Failsafe mode		without
Dimensions		See diagram
Contacts		Bronze/Surface Au-Ag
Standards		
Standards compliance		IEC 61643-21 / EN 61643-21 / UL497C / UL497E
RohS compliance		Yes
Part number		
621173		

PRC450-NW/MF



- ↳ 'Quarter wave' coaxial protector type N
- ↳ Frequency : 430-470 MHz
- ↳ Low insertion loss
- ↳ $I_{max} > 50 \text{ kA}$
- ↳ Maintenance free
- ↳ Bi-directional
- ↳ IP65



Electrical Characteristics		
Max. frequency	f max.	430-470 MHz
Insertion loss		< 0.2 dB
Return loss		> 20 dB
Impedance		50 ohms
VSWR		< 1.2:1
Max. load current	IL	10 A
Max. discharge current (max. withstand @ 8/20 μs by pole)	I _{max}	50 kA
Protection mode(s)		Common mode
Protection level (@ I _n (8/20 μs))	Up	< 30 V
Impulse current (2 x 10/350 μs Test - D1 Category)	I _{imp}	25 kA
Nominal discharge current (8/20 μs Test x 10 - C2 Category)	I _n	25 kA
Max Power		1500 W
PIM 3rd order (2x20W)		< -160 dBc
DC Pass		false
Mechanical Characteristics		
Technology		Quarter Wave
Connection to Network		Connector N Male/Female
Mounting		Feedthrough
Housing material		Brass/Surface plating : Cu Zn Sn
Operating temperature	T _u	-40/+85°C
Protection rating		IP65
Outdoor application		Yes
Failsafe mode		without
Dimensions		See diagram
Contacts		Bronze/Surface Au-Ag
Standards		
Standards compliance		IEC 61643-21 / EN 61643-21 / UL497C / UL497E
RohS compliance		Yes
Part number		
621155		

PRC727-4310/MF



- ↳ 'Quarter wave' coaxial protector type 4.3-10
- ↳ Frequency : 690-2700 MHz
- ↳ Low insertion loss
- ↳ $I_{max} = 40 \text{ kA}$
- ↳ Maintenance free
- ↳ Bi-directional
- ↳ IP65



Electrical Characteristics		
Frequency range	f	690-2700 MHz
Insertion loss		< 0.2 dB
Return loss		> 19 dB
Impedance		50 ohms
VSWR		< 1.25:1
Max. load current	IL	10 A
Max. discharge current (max. withstand @ 8/20 μs by pole)	I_{max}	40 kA
Protection mode(s)		Common mode
Protection level (@ I_n (8/20 μs))	U_p	< 30 V
Impulse current (2 x 10/350 μs Test - D1 Category)	I_{imp}	25 kA
Nominal discharge current (8/20 μs Test x 10 - C2 Category)	I_n	25 kA
Max Power		1500 W
PIM 3rd order (2x20W)		< -160 dBc
DC Pass		false
Mechanical Characteristics		
Technology		Quarter Wave
Connection to Network		Connector 4.3-10 Male/Female
Mounting		Feedthrough
Housing material		Brass/Surface plating : Cu Zn Sn
Operating temperature	T_u	-40/+85°C
Protection rating		IP65
Outdoor application		Yes
Failsafe mode		without
Dimensions		See diagram
Contacts		Bronze/Surface Au-Ag
Weight		0.212 kg
Standards		
Standards compliance		IEC 61643-21 / EN 61643-21 / UL497C / UL497E
RohS compliance		Yes
Part number		
61900		

PRC827S-4310/FF



- ↳ 'Quarter wave' coaxial protector type 4.3-10
- ↳ Frequency : 800-2200 MHz
- ↳ Low insertion loss
- ↳ $I_{max} > 50 \text{ kA}$
- ↳ Maintenance free
- ↳ Bi-directional
- ↳ IP65



Electrical Characteristics		
Frequency range	f	800-2200 MHz
Insertion loss		< 0.2 dB
Return loss		> 20 dB
Impedance		50 ohms
VSWR		< 1.2:1
Max. load current	IL	10 A
Max. discharge current (max. withstand @ 8/20 μs by pole)	I_{max}	50 kA
Protection mode(s)		Common mode
Protection level (@ I_n (8/20 μs))	U_p	< 30 V
Impulse current (2 x 10/350 μs Test - D1 Category)	I_{imp}	25 kA
Nominal discharge current (8/20 μs Test x 10 - C2 Category)	I_n	25 kA
Max Power		1500 W
PIM 3rd order (2x20W)		< -160 dBc
DC Pass		false
Mechanical Characteristics		
Technology		Quarter Wave
Connection to Network		Connector 4.3-10 Female/Female
Mounting		connector
Housing material		Brass/Surface plating : Cu Zn Sn
Operating temperature	T_u	-40/+85°C
Protection rating		IP65
Outdoor application		Yes
Failsafe mode		without
Dimensions		See diagram
Contacts		Bronze/Surface Au-Ag
Weight		0.27 kg
Standards		
Standards compliance		IEC 61643-21 / EN 61643-21 / UL497C / UL497E
RoHS compliance		Yes
Part number		
890204		

PRC827S-716/FF

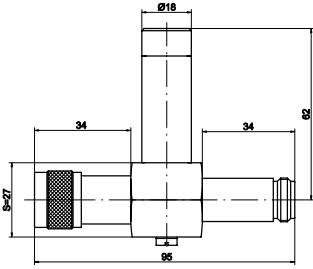


- ↳ 'Quarter wave' coaxial protector type 4.3-10
- ↳ Frequency : 800-2200 MHz
- ↳ Low insertion loss
- ↳ $I_{max} > 50 \text{ kA}$
- ↳ Maintenance free
- ↳ Bi-directional
- ↳ IP65

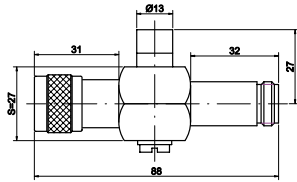


Electrical Characteristics		
Frequency range	f	800-2200 MHz
Insertion loss		< 0.2 dB
Return loss		> 20 dB
Impedance		50 ohms
VSWR		< 1.2:1
Max. load current	IL	10 A
Max. discharge current (max. withstand @ 8/20 μ s by pole)	I_{max}	50 kA
Protection mode(s)		Common mode
Protection level (@ I_n (8/20 μ s))	U_p	< 30 V
Impulse current (2 x 10/350 μ s Test - D1 Category)	I_{imp}	25 kA
Nominal discharge current (8/20 μ s Test x 10 - C2 Category)	I_n	25 kA
Max Power		1500 W
PIM 3rd order (2x20W)		< -160 dBc
DC Pass		false
Mechanical Characteristics		
Technology		Quarter Wave
Connection to Network		Connector 4.3-10 Female/Female
Mounting		connector
Housing material		Brass/Surface plating : Cu Zn Sn
Operating temperature	T_u	-40/+85°C
Protection rating		IP65
Outdoor application		Yes
Failsafe mode		without
Dimensions		See diagram
Contacts		Bronze/Surface Au-Ag
Weight		0.27 kg
Standards		
Standards compliance		IEC 61643-21 / EN 61643-21 / UL497C / UL497E
RoHS compliance		Yes
Part number		
890203		

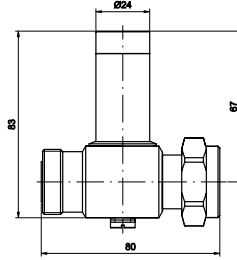
«QUARTER-WAVE» COAXIAL PROTECTORS



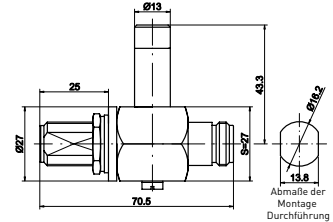
PRC822S-N/MF



PRC5800-N/MF

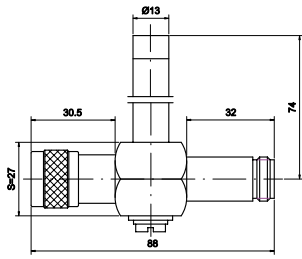


PRC822S-716/MF

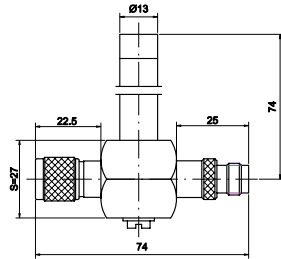


PRC2100-NW/FF

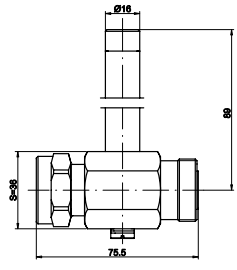
Abmaße der Montage Durchführung



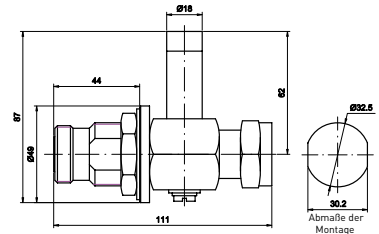
PRC900-N/MF



PRC900-T/MF

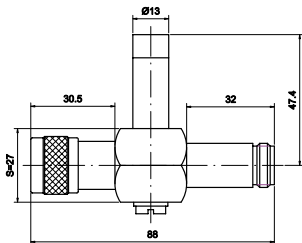


PRC900-716/MF

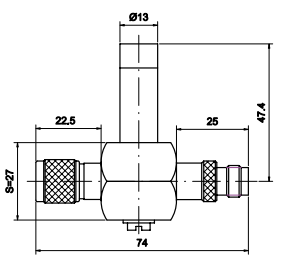


PRC822S-716W/MF

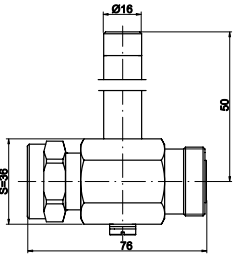
Abmaße der Montage Durchführung



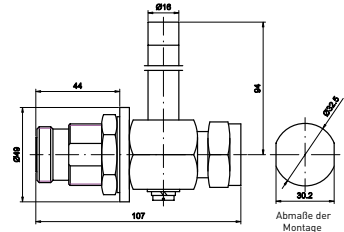
PRC1800-N/MF



PRC1800-T/MF

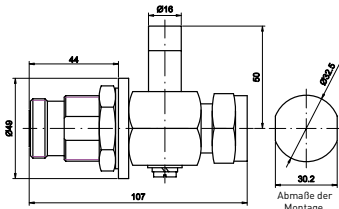


PRC1800-716/MF



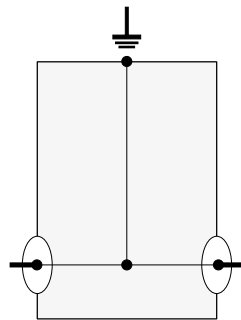
PRC900-716W/MF

Abmaße der Montage Durchführung



PRC1800-716W/MF

Abmaße der Montage Durchführung



По вопросам продаж и поддержки обращайтесь:

Алматы (7273)495-231	Казань (843)206-01-48	Новокузнецк (3843)20-46-81	Смоленск (4812)29-41-54
Архангельск (8182)63-90-72	Калининград (4012)72-03-81	Новосибирск (383)227-86-73	Сочи (862)225-72-31
Астрахань (8512)99-46-04	Калуга (4842)92-23-67	Омск (3812)21-46-40	Ставрополь (8652)20-65-13
Барнаул (3852)73-04-60	Кемерово (3842)65-04-62	Орел (4862)44-53-42	Сургут (3462)77-98-35
Белгород (4722)40-23-64	Киров (8332)68-02-04	Оренбург (3532)37-68-04	Тверь (4822)63-31-35
Брянск (4832)59-03-52	Краснодар (861)203-40-90	Пенза (8412)22-31-16	Томск (3822)98-41-53
Владивосток (423)249-28-31	Красноярск (391)204-63-61	Пермь (342)205-81-47	Тула (4872)74-02-29
Волгоград (844)278-03-48	Курск (4712)77-13-04	Ростов-на-Дону (863)308-18-15	Тюмень (3452)66-21-18
Вологда (8172)26-41-59	Липецк (4742)52-20-81	Рязань (4912)46-61-64	Ульяновск (8422)24-23-59
Воронеж (473)204-51-73	Магнитогорск (3519)55-03-13	Самара (846)206-03-16	Уфа (347)229-48-12
Екатеринбург (343)384-55-89	Москва (495)268-04-70	Санкт-Петербург (812)309-46-40	Хабаровск (4212)92-98-04
Иваново (4932)77-34-06	Мурманск (8152)59-64-93	Саратов (845)249-38-78	Челябинск (351)202-03-61
Ижевск (3412)26-03-58	Набережные Челны (8552)20-53-41	Севастополь (8692)22-31-93	Череповец (8202)49-02-64
Иркутск (395)279-98-46	Нижний Новгород (831)429-08-12	Симферополь (3652)67-13-56	Ярославль (4852)69-52-93
Россия (495)268-04-70	Киргизия (996)312-96-26-47	Казахстан (7172)727-132	